



Photo 1 – Room 105
Condensation was leaking from the ceiling and a ceiling tile was missing.



Photo 2 – Room 106
Condensation was leaking from the ceiling and a ceiling tile was missing.



Cook Wissahickon Elementary School
Photographs taken: September 9, 2016 and September 12, 2016



Photo 3 – Room 106
Water was noted on the file cabinet from the condensation leak.



Photo 4 – Room 108
A water stained ceiling tile was observed.



Photo 5 – Room 108
A ceiling tile fell in the corner.



Photo 6 –Room 105
A water stained ceiling tile was observed.



Photo 7 – Room 110

Condensation was leaking from the ceiling and a missing ceiling tile was observed.



Photo 8 – Room 111

A water stained ceiling tile was observed.



Photo 9 – Room 111
The return air filter tray was not seated properly.



Photo 10 – Room 111
Water stained ceiling tiles were observed.



Photo 11- IMC



Photo 12 -Basement Hallway
Water stained and moldy ceiling tiles were observed.



Photo 13 – Basement Hallway
Water stained and moldy ceiling tiles were observed.



Photo 14 – Art Room 6



Photo 15 – Art Room 6



Photo 16 – Art Room 6
Condensation was leaking from the ceiling.



Photo 17 – Art Room 6



Photo 18 – Art Room 6
Mold growth was observed on the wooden cabinetry.



Photo 19 – Art Room 6
Mold growth was observed on the wooden cabinetry.

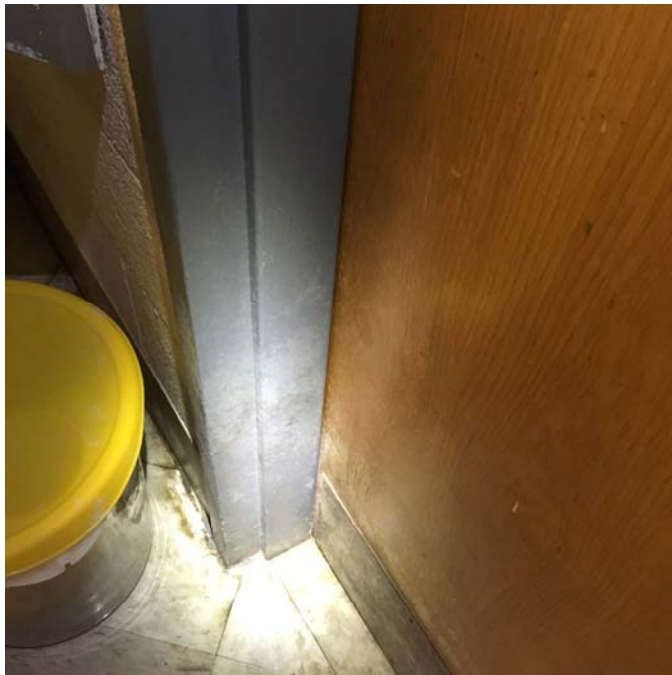


Photo 20 – Art Room 6
Mold growth was observed on the wooden doors and metal frames.



Photo 21 – Art Room 6
Particulate accumulation was observed on the supply diffuser and ceiling tiles.



Photo 22 – Art Room 6
Delaminated 9"x9" floor tile was observed.



Photo 23 – Art Room 6
Particulate accumulation was observed on the supply diffusers and ceiling tiles.



Photo 24 – Art Room 6
Mold growth was observed on the metal cabinetry.



Photo 25 – Art Room 6
Mold growth was observed on the metal cabinetry.



Photo 26 – Art Room 6
Condensation was leaking from the ceiling.

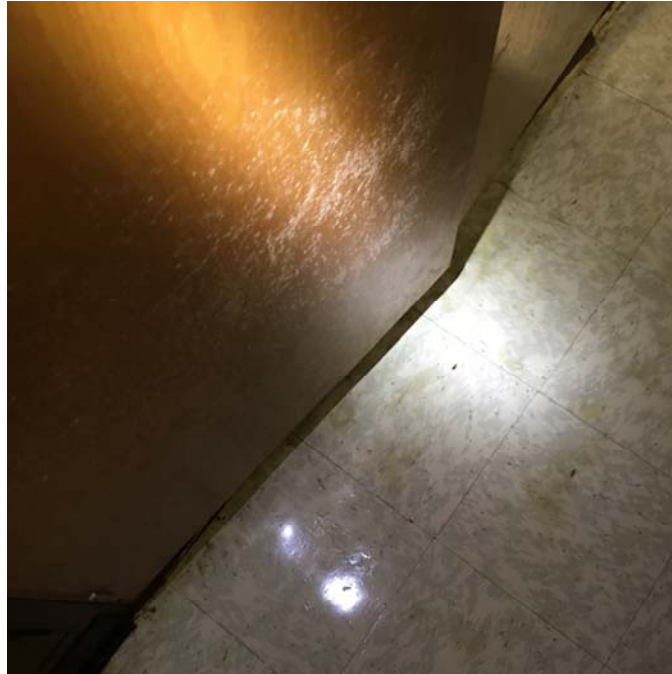


Photo 27 – Art Room 6
Mold growth was observed on the wooden cabinetry.



Photo 28 – Art Room 6
Mold growth was observed on the wooden cabinetry.



Photo 29 – Art Room 6
Mold growth was observed on the wooden cabinetry.



Photo 30 – Art Room 6
Mold growth was observed on the plastic chairs.



Photo 31 – Art Room 6
Mold growth was observed on the wooden cabinetry.



Photo 32 – Art Room 6
Mold growth was observed on the wooden cabinetry.

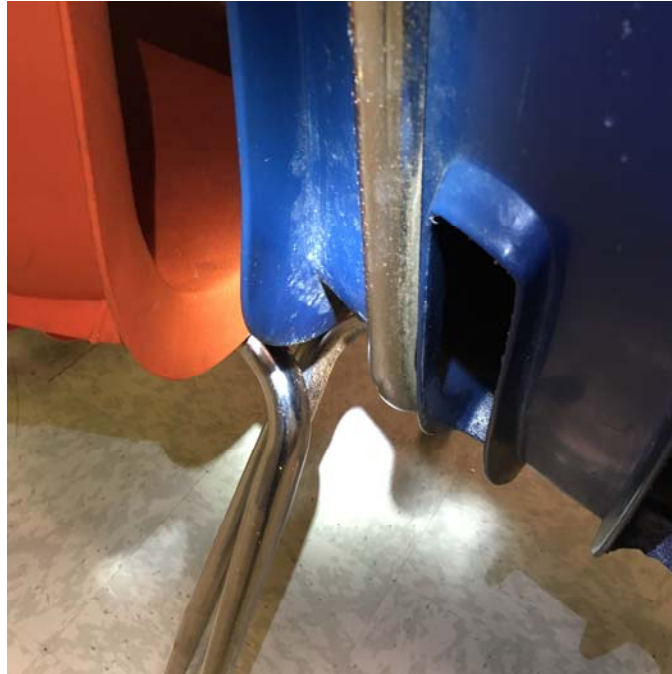


Photo 33 – Art Room 6
Mold growth was observed on the plastic chairs.



Photo 34 – Art Room 6
Mold growth was observed on the plastic chairs.



Photo 35 – Music Room 5



Photo 36 – Music Room 5

Particulate accumulation was observed on the supply diffusers and ceiling tiles.



Photo 37 – Music Room 5
Mold growth was observed on the wooden cabinetry.



Photo 38 – Music Room 5
Mold growth was observed on the wooden cabinetry.



Photo 39 – Instrumental Room



Photo 40 – Instrumental Room

Particulate accumulation was observed on the supply diffusers and ceiling tiles.



Photo 41- Music Suite Air Handler Room
Standing water was observed on the floor and delaminated 9"x9" floor tile was observed.



Photo 42- Gym Boy's Room
A missing ceiling tile was observed and condensate appeared to be leaking from a pipe.



Photo 43- Practice Room A
A missing ceiling was noted, no signs of active leaks were observed.



Photo 44- Instrumental Room
Particulate accumulation was observed on the supply diffusers.



Photo 44- Art Room
A section of delaminated floor tile was observed.



Photo 45- Exposed intake grille



Photo 46- Room 1 closet
Mold growth was observed fiberglass pipe insulation.



Photo 47- Room 1
The back of the cabinet is rotted allowing outdoor air into the room.



Photo 48- Music Office



Photo 49- Music Office
Mold growth was observed on the metal desk.



Photo 50- Room 211
A water stained ceiling tile was observed next to the closet.



Photo 51- Room 211
A water stain trail appeared to be coming from the window. The occupant reported water intrusion on the floor during heavy rain.



Photo 52- Room 210
Small delaminated sections of the concrete ceiling were observed.