



School District of Philadelphia
Office of Environmental Management Services
440 North Broad St.
Philadelphia, PA 19030

Originally Requested by: Durelle Holmes

Date Inspected:
9/9/16

Inspector Name: Brian Joseph
Company: KEM Partners

Mold Design Data Collection (DDC)

(List each work area location separately) rev. 8/8/13

Date Issued to OEMS:
9/12/16

Photographs Attached: Yes
Sketch(s) Attached: No

Name of Building: Cook Wissahickon ES

Address: 201 E. Salignac St. ULCS # 6410

Work Area Location(s): (1) Art Room ; (2) Music Room; (3) Basement Hallway

Total Number of Work Locations: 3 Total Number of Action Items: 13

Anticipated Project Duration: 10 Man-days

Work Order #: _____

Work Area Location (1): Art Room 6 Type of Ventilation: unit ventilator/windows

Equipment Needed: HEPA Vacuum: ☒ Air Filtration: ☒ Critical Barriers: ☒ Ladders: ☒ Detergent Solution: ☒
Encapsulant: ☐ Dehumidifiers: N/A Fans: N/A

Notes: Deactivate HVAC and install critical barrier on all doorways, supply and return diffusers.

Action Item	Affected Material(s)	Total Quantity	Remediation*	Source of Moisture	Comments/Condition (i.e. dry/wet)
1	Mold growth was observed on the wooden built-in cabinetry.	ALL	CLN	Condensation leaks from ceiling and lack of ventilation.	HEPA Vacuum and Clean
2	Mold growth was observed on the metal cabinetry	ALL			
3	Mold growth was observed on the plastic chairs and tables.	30 EA			
4	Mold growth was observed on the wooden doors and metal frames.	4 EA			
5	All materials and contents should be thoroughly checked and cleaned or discarded as needed.	ALL			
6	No signs of mold growth were observed on the ceiling; however, particulate accumulation was observed on the supply diffusers and ceiling tiles.	ALL		N/A	
7	No signs of mold growth were observed on the floor; however, it should be cleaned following completion of the above.	ALL		N/A	

Size of Work Area: SM ☐ MED ☐ LG ☒
(remove); RPL (replace)

*Remediation Codes: DRY (dry); CLN (clean); ENP (encapsulate); DIS (discard); RMV

Signature: Brian Joseph

Date: 9/12/16

Work Area Location (2): Music Room 5 Type of Ventilation: ducted HVAC

Equipment Needed: HEPA Vacuum: ☒ Air Filtration: ☒ Critical Barriers: ☒ Ladders: ☒ Detergent Solution: ☒

Encapsulant: ☐ Dehumidifiers: N/A Fans: N/A

Notes: Deactivate HVAC and install critical barrier on all doorways, supply and return diffusers

Action Item	Affected Material(s)	Total Quantity	Remediation*	Source of Moisture	Comments/Condition (i.e. dry/wet)
8	Mold growth was observed on the wooden built-in cabinetry.	All	CLN	Condensation leaks from ceiling and lack of ventilation.	HEPA Vacuum and Clean
9	No signs of mold growth were observed on the ceiling; however, particulate accumulation was observed on the supply diffusers and ceiling tiles.	1 EA			
10	All materials and contents should be thoroughly checked and cleaned or discarded as needed.	ALL			
11	No signs of mold growth were observed on the unit ventilator, however, the interior and exterior of the cabinet should be thoroughly cleaned.	1 EA	CLN	N/A	HEPA Vacuum and Clean
12	No signs of mold growth were observed on the floor; however, it should be cleaned following completion of the above.	N/A	CLN	N/A	HEPA Vacuum and Clean

Size of Work Area: SM ☐ MED ☐ LG ☒
(remove); RPL (replace)

*Remediation Codes: DRY (dry); CLN (clean); ENP (encapsulate); DIS (discard); RMV

Work Area Location (3): Basement Hallway Type of Ventilation: N/A

Equipment Needed: HEPA Vacuum: ☒ Air Filtration: ☒ Critical Barriers: ☒ Ladders: ☒ Detergent Solution: ☒
Encapsulant: ☐ Dehumidifiers: N/A Fans: N/A

Action Item	Affected Material(s)	Total Quantity	Remediation*	Source of Moisture	Comments/Condition (i.e. dry/wet)
13	Mold growth was observed on several ceiling tiles in the basement hallway	12 EA	RPL	Condensation from piping located above the ceiling.	Replace the impacted ceiling tiles.

Size of Work Area: SM ☐ MED ☒ LG ☐
(remove); RPL (replace)

*Remediation Codes: DRY (dry); CLN (clean); ENP (encapsulate); DIS (discard); RMV



Photo 1 – Art Room 6



Photo 2 – Art Room 6



Photo 3 – Art Room 6
Condensation was leaking from the ceiling.



Photo 4 – Art Room 6



Photo 5 – Art Room 6
Mold growth was observed on the wooden cabinetry.



Photo 6 – Art Room 6
Mold growth was observed on the wooden cabinetry.



Photo 7 – Art Room 6
Mold growth was observed on the wooden doors and metal frames.



Photo 8 – Art Room 6
Particulate accumulation was observed on the supply diffuser and ceiling tiles.



Photo 9 – Art Room 6
Delaminated 9"x9" floor tile was observed.



Photo 10 – Art Room 6
Particulate accumulation was observed on the supply diffusers and ceiling tiles.



Photo 11 – Art Room 6
Mold growth was observed on the metal cabinetry.



Photo 12 – Art Room 6
Mold growth was observed on the metal cabinetry.



Photo 13 – Art Room 6
Condensation was leaking from the ceiling.

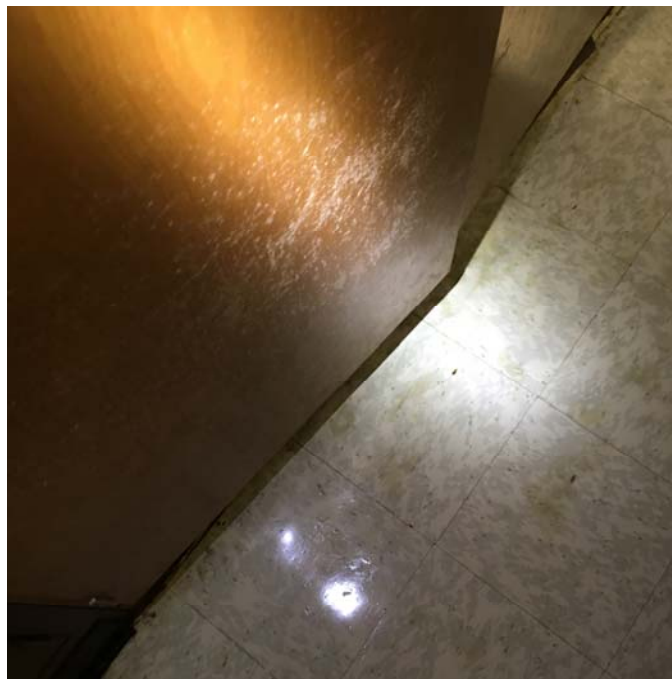


Photo 14 – Art Room 6
Mold growth was observed on the wooden cabinetry.



Photo 15 – Art Room 6
Mold growth was observed on the wooden cabinetry.



Photo 16 – Art Room 6
Mold growth was observed on the wooden cabinetry.



Photo 17 – Art Room 6
Mold growth was observed on the plastic chairs.



Photo 18 – Art Room 6
Mold growth was observed on the wooden cabinetry.



Photo 19 – Art Room 6
Mold growth was observed on the wooden cabinetry.



Photo 20 – Art Room 6
Mold growth was observed on the plastic chairs.



Photo 21 – Art Room 6
Mold growth was observed on the plastic chairs.

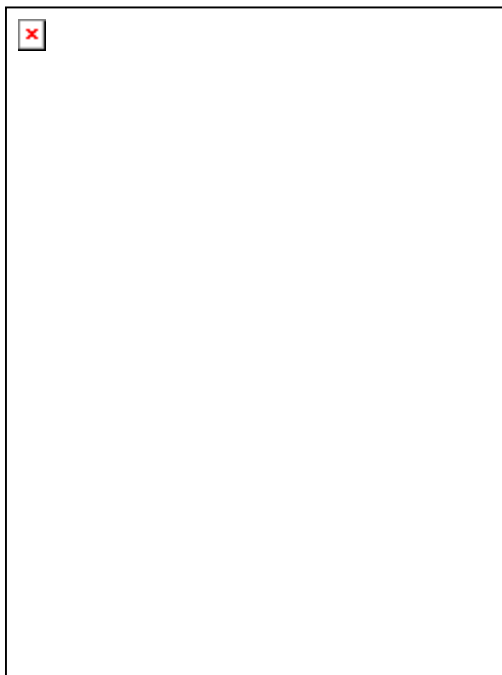


Photo 22 – Music Room 5

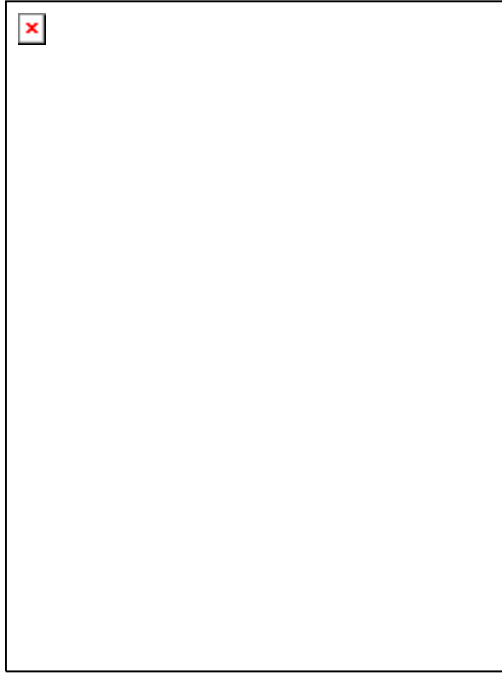


Photo 23 – Music Room 5

Particulate accumulation was observed on the supply diffusers and ceiling tiles.

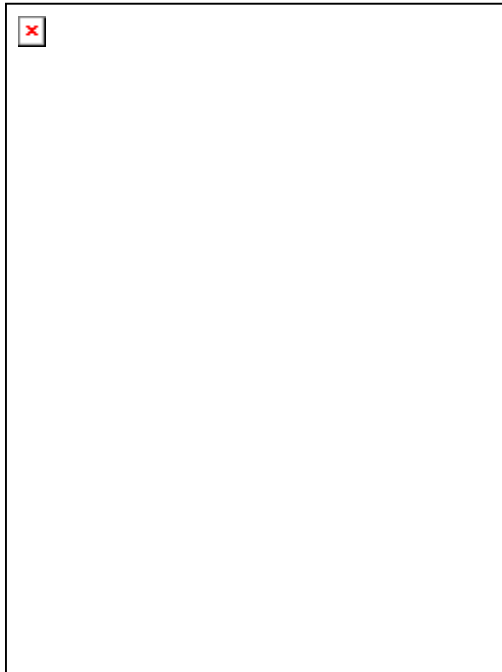


Photo 24 – Music Room 5

Mold growth was observed on the wooden cabinetry.

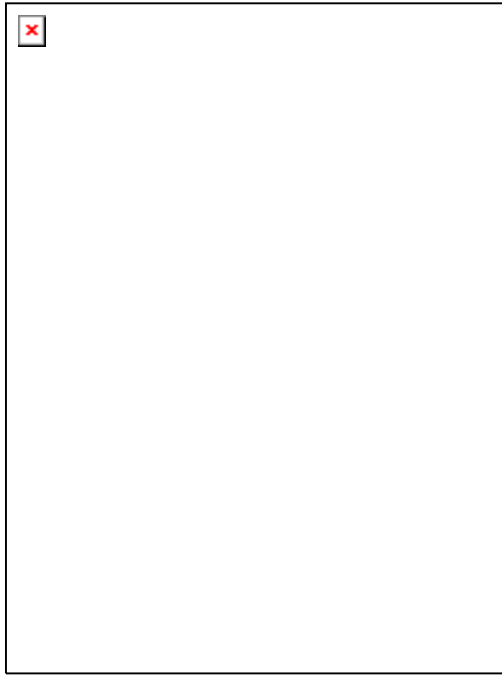


Photo 25 – Music Room 5
Mold growth was observed on the wooden cabinetry.



Photo 26 –Basement Hallway
Water stained and moldy ceiling tiles were observed.



Photo 27 – Basement Hallway
Water stained and moldy ceiling tiles were observed.